

Laser Electronics LE GmbH

Carl-Scheele-Straße 16 • D-12489 Berlin • Germany  
Tel.: +49 (0)30 6392 7820 • Fax: +49 (0)30 6392 7821  
info@laser-electronics.com • www.laser-electronics.com



# Laser Electronics Terminal Software

## LETSoft

### *User Manual*



# Contents

<b>1</b>	<b>General.....</b>	<b>3</b>
1.1	Trademarks.....	3
1.2	General Safety Considerations.....	3
1.3	Laser Safety .....	3
1.3.1	Laser Radiation .....	3
1.3.2	Laser Class.....	4
<b>2</b>	<b>Introduction.....</b>	<b>5</b>
<b>3</b>	<b>Installation .....</b>	<b>6</b>
<b>4</b>	<b>User Interface .....</b>	<b>7</b>
4.1	Main Window .....	7
4.2	Operating window.....	8
4.2.1	Settings – LASER Menu.....	9
4.2.2	Settings – TEMPERATURE Menu .....	11
4.2.3	Settings – TIMING Menu .....	13
4.2.4	Settings – COOLER Menu.....	14
4.2.5	Settings – PILOT LASER Menu.....	16
4.2.6	Settings – EXTERNAL INPUTS Menu .....	17
4.2.7	Settings – CALIBRATION Menu.....	18
4.3	Error Messages.....	19
<b>5</b>	<b>Reference .....</b>	<b>21</b>
5.1	Menu and Toolbar .....	21

# 1 General

The information given in this document is subject to change without notice.

©Copyright LASER ELECTRONICS LE GMBH 2018.

All rights reserved. Reproduction, adaptation, or translation without prior written permission is prohibited, except as allowed under the copyright laws.

## 1.1 Trademarks

Products that are referred to in this document may be either trademarks and/or registered trademarks of the respective owners. The publisher and the author make no claim to these trademarks.

Microsoft and Windows are either registered trademarks or trademarks of Microsoft Corporation in the United States and/or other countries.

## 1.2 General Safety Considerations

Before switching on the instrument, make sure it has been properly grounded through the supplied AC power cable to a socket outlet with a protective earth contact. Any interruption of the grounding can result in personal injury.

This instrument must be used under normal conditions and as specified, otherwise the protection provided by the instrument could be impaired.

Always replace blown fuses with the same rating and acting speed.

ESD: Electrostatic discharge (ESD) on or near the connectors can damage electronic devices inside the instrument. Personnel should touch the metal frame of the instrument for a second before touching any connector.

## 1.3 Laser Safety

### 1.3.1 Laser Radiation

This instrument is designed to control laser diodes. Please read also very carefully the operating instructions given by the manufacturer of the laser diode.

The radiation of the used laser diode may be visible or invisible. These products emit radiation in the 630 to 1560nm spectral region.

**Use caution to avoid hazardous exposure to the beam. Take precautions to eliminate exposure to a direct or reflected beam. Do not look directly into the beam of the laser diode under conditions which exceeds the specified limits. Never observe the laser beam through optical instruments.**

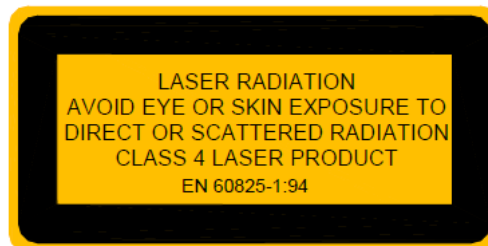
### 1.3.2 Laser Class

The laser safety classification and the relevant parameters of the laser diode for normal operation are indicated on the top of the laser diode. The laser radiation is emitted through the optics at the side of the laser diode where the warning label is placed or at the fiber connector. The laser diodes are classified according to EN 60825-1:94.

General warning label for laser radiation:

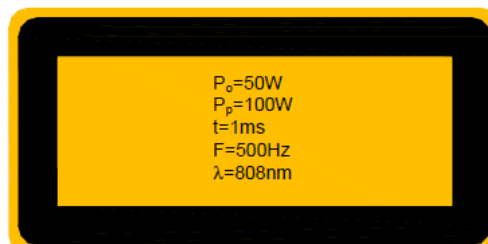


Label for laser radiation:



Label for relevant parameters (example) of the laser diode for normal operation and its statements:

Average radiant power at max. rep. frequ.:  $P_o$   
Peak radiant power:  $P_p$   
Pulse width:  $t$   
Max. pulse repetition frequency:  $F$   
Wavelength laser radiation:  $\lambda$



## 2 Introduction

LATSoft is a test, control, and simulation tool. It allows you to monitor the device or to test the serial communication of a single device and to control this device. LETSoft is easy to use and works on almost any standard PC with Windows 10, Windows 8, Windows 7 SP1.

LETSoft will work with the COM communication ports provided by your operating system. Physically, the port will be RS232 SUB D9 interfaces in many cases.

LETSoft has also been successfully tested with many popular USB-to-Serial converters, virtual null modem software drivers, or Embedded Development tools that appear as a virtual COM port in Windows.

This manual only refers to RS232 serial connections in detail.

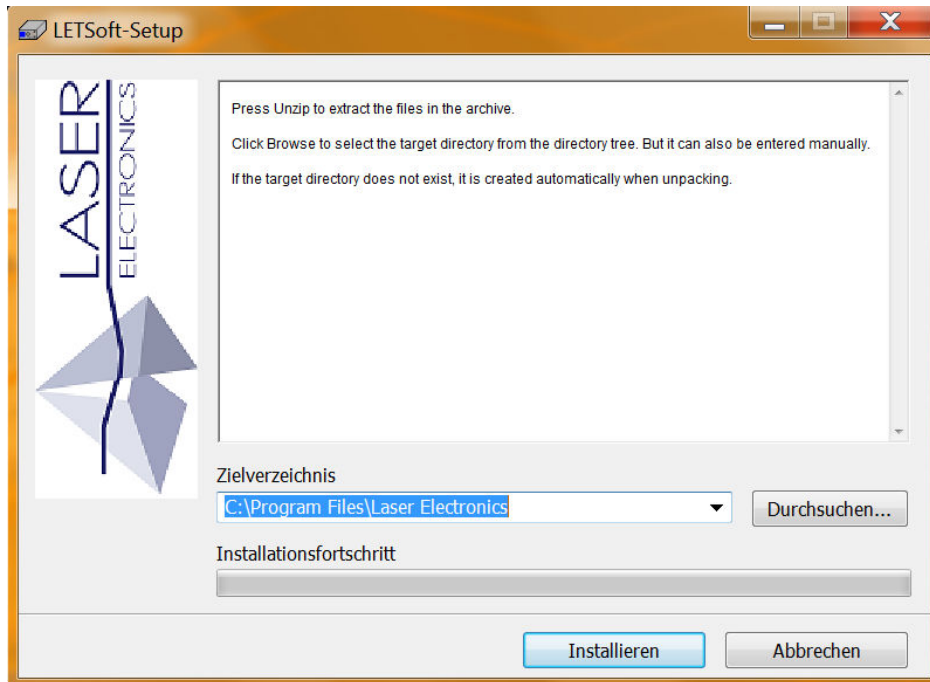
### 3 Installation

Please read the whole operating instructions before using this Tool.

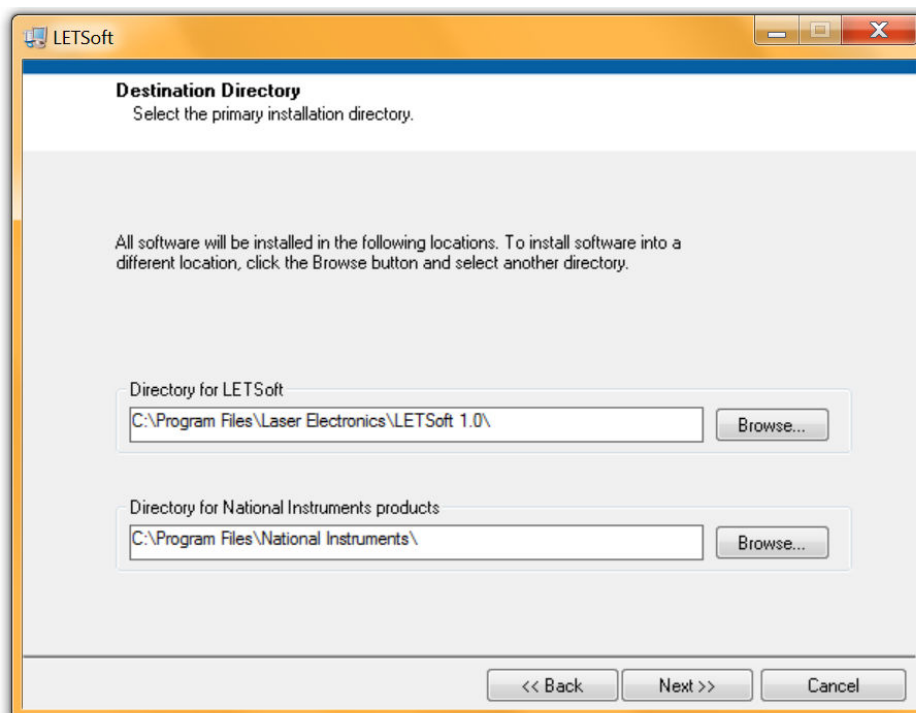
#### Installation of the LATSoft Tool

Download the LETSoft-Setup.exe from our website: <http://laser-electronics.de>

Extract the files in the archive.



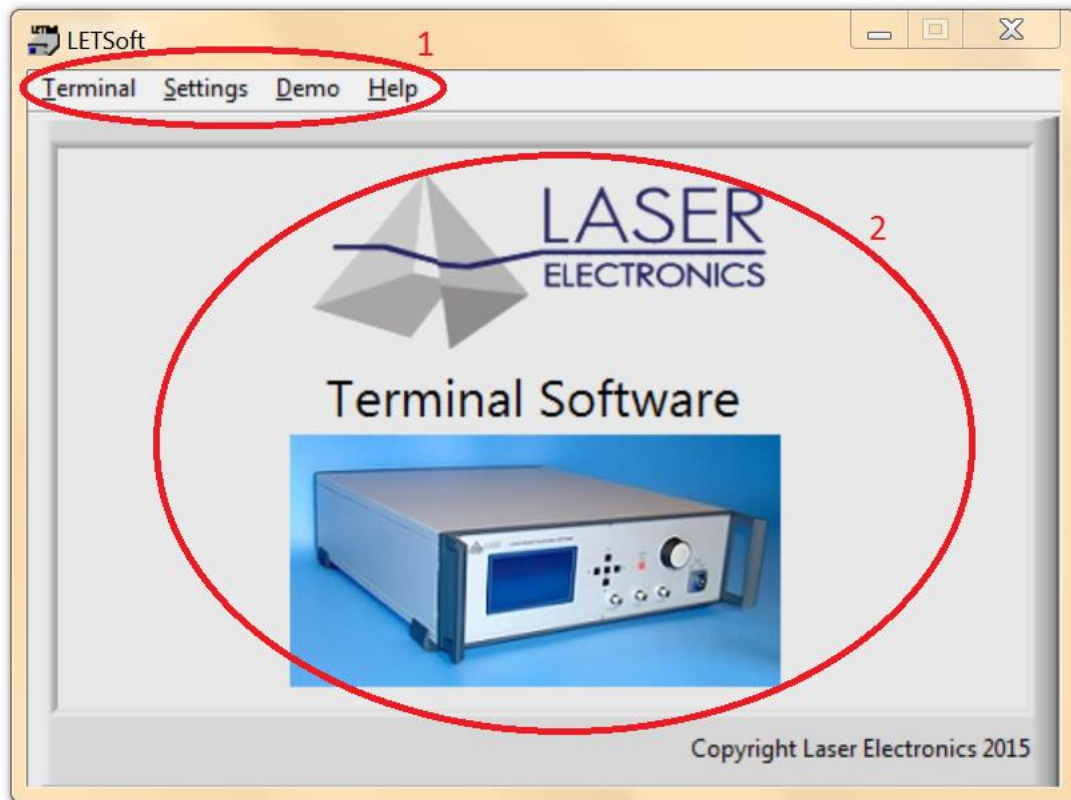
After unzip, the LETSoft installation window opens automatically. Follow the installation instructions.



## 4 User Interface

### 4.1 Main Window

The main window of LETSoft is divided into two sections



#### 4.1.1.1 [Toolbar](#)

Main LETSoft functions may be selected from the Toolbar.

#### 4.1.1.2 **Communication Window**

Displays the communication structure of the serial interface.



If one of our devices is connected, it will be detected automatically. This opens a new window.

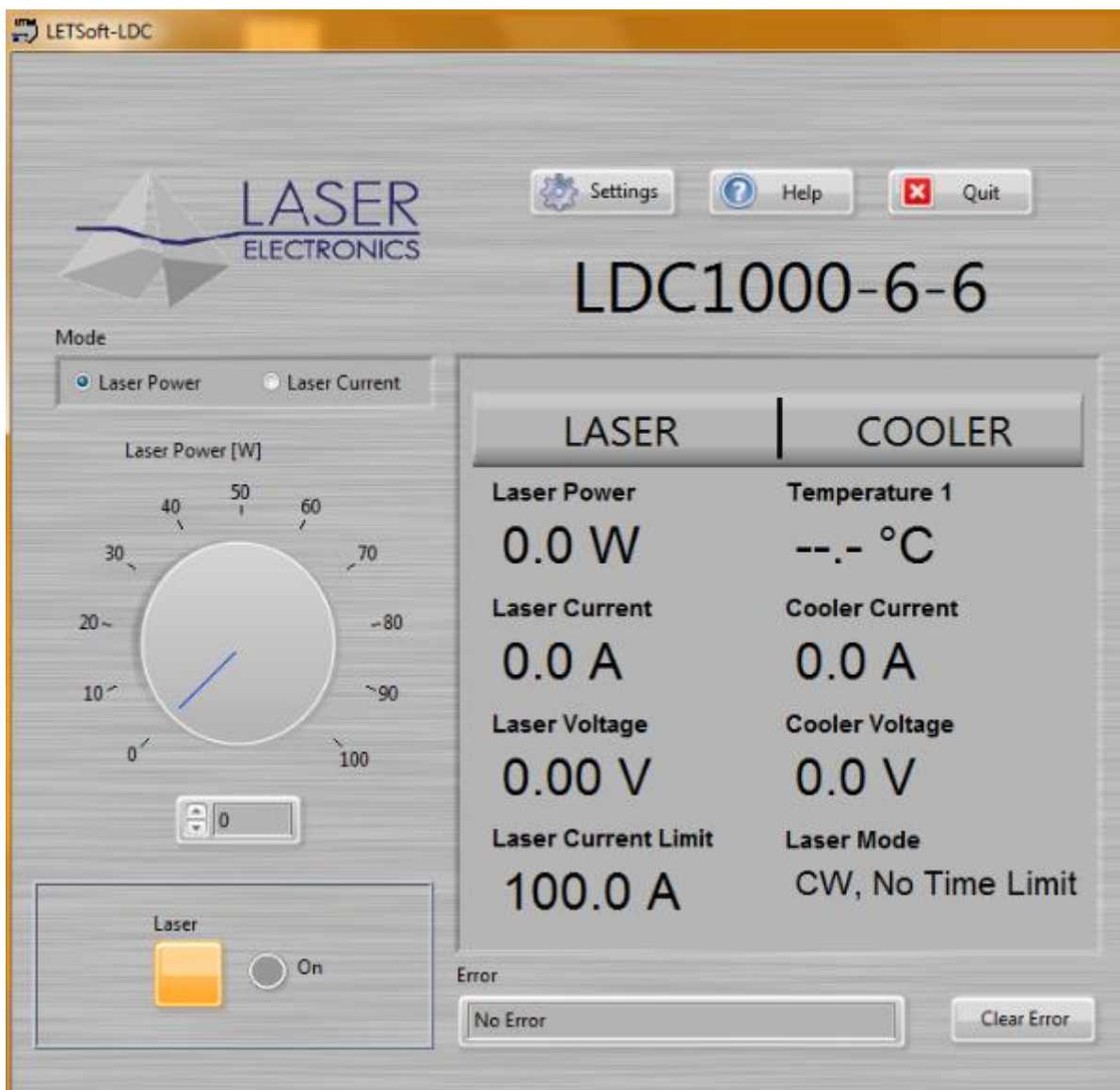
## 4.2 Operating window

Right it shows the measured laser diode current and voltage, the displayed power is calculated from the laser diode current and the calibration points. Further, the laser power limit and laser mode is displayed. Further, the laser current limit, the laser mode, the measured laser diode temperature T1 is displayed. Cooler Current the current of cooler 1. "+" means heating current, and "-" cooling current.

Within the mode menu you can set the optical power or the laser current. Under there is a Rotary knob for setting laser diode current or laser diode power.

Bottom left is a button to turn on and off the laser diode.

When you press the Settings button opens a settings menu. In this menu, various parameters can be set.





## **I - Laser Current**

After switching on the instrument the set laser current is 0. It can be set up to laser current limit. The laser diode is turned on by pressing the Laser key and the desired current is applied to the laser diode. The actual current that is applied to the laser diode is displayed right at the display. The current applied to the laser diode can also be varied when the laser diode is turned on by modifying the desired current with the **Rotary** knob. The laser diode is turned off by pressing the **Laser** button again.

## **P - Optical Power**

After switching on the instrument the set optical power is 0. The set optical power will be calculated into the laser current by the calibration points (see menu [calibration](#)). The calculated laser current will be shown immediately on position set laser current. The optical power can also be varied when the laser diode is turned on. In this case the calculated laser current is applied to the laser diode immediately.

## **4.2.1 Settings – LASER Menu**

### **Laser Mode**

The operational mode should only be changed when the laser diode is turned off. Nevertheless when changing the operational mode, the laser diode is turned off automatically.

The following four operational modes can be selected and combined:

CW, No Time Limit	The laser diode is operated with a continuous current. The duration of the operation is not time limited internally. The laser diode is turned on and off by pressing the Laser key.
CW, Time Limit	The laser diode is operated with a continuous current. The duration of the operation is time limited according to the time limit, see menu TIMING. The laser diode is turned on by pressing the Laser key and turned off automatically after the set time limit.
Pulse, No Time Limit	The laser diode is operated with a pulsed current, see menu TIMING. The duration of the operation is not time limited internally. The laser diode is turned on and off by pressing the Laser key.
Pulse, Time Limit	The laser diode is operated with a pulsed current. The duration of the operation is time limited according to the time limit, see menu TIMING. The laser diode is turned on by pressing the Laser key and turned off automatically after the set time limit.

The desired mode is stored permanently in a non-volatile memory, even when the instrument is switched off.

### **Laser Current Limit**

Set the laser current limit to the indicated maximum current value of the laser diode which can be found in the individual data sheet. Setting the appropriate current limit protects the laser diode from being overloaded electrically and optically.

The value of the laser current limit is stored permanently in a non-volatile memory, even when the instrument is switched off.

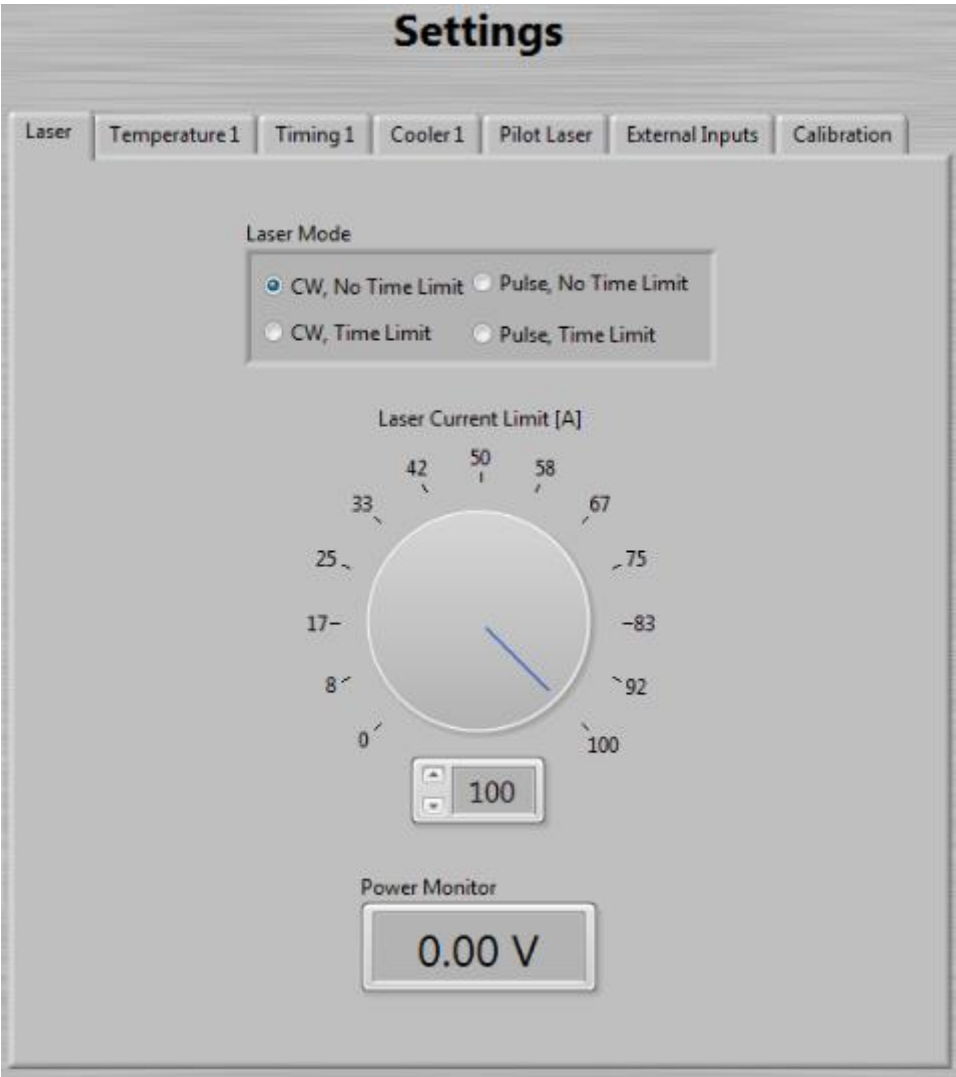
**Remark:** The maximum possible laser current limit is predefined by the instrument.

### **Power Monitor**

If the laser diode is provided with a power monitor (photo diode), the power monitor voltage will be shown. So, the calibrating can be made without a power meter.

E.g. the user increases laser current up to the power monitor voltage is 1,2V. From the laser diode

data sheet the user read  $1,2V = 55W$  optical power. The actual laser current is 30A.  $I=30A, P=55W$ .



## 4.2.2 Settings – TEMPERATURE Menu

Within the temperature menu it can be set the temperature, the upper and lower temperature limit and the control loop parameters of the PID-temperature controller for the first and second (optional) cooler.

### Temperature

The value of the temperature can only be changed within the valid temperature range as defined by the upper and lower temperature limit. The value for the temperature must be within 0°C to 50°C. The desired temperature is stored permanently in a non-volatile memory, even when the instrument is switched off.

### Temperature limits

The operating laser diode and also the optional custom application should be protected by operating setting temperature limits according to the specific datasheet provided by the manufacturer. If the temperature of cooler 1 or cooler 2 (provided they are enabled) are out of the selected range, the laser diode turned off automatically and an error message appears on the display, see section *Error messages*.

The desired temperature limits are stored permanently in a nonvolatile memory, even when the instrument is switched off.

#### Note:

The instrument accepts only inputs where the temperature of the upper limit is higher than the temperature of the lower limit.

The value for the upper and lower temperature limit must be within 0°C to 50°C.

### PID-Temperature control-loop parameters

The temperature controller is realized as a PID control loop for optimum performance (P means proportional, I means integral and D means differential portion).

The control loop parameters can be set to values between 0 and 100. The default settings which provide usually good controlling are as follows:

Cooler 1		Cooler 2	
Portion	Value	Portion	Value
P	30	P	20
I	10	I	3
D	0	D	0

The desired control loop parameter is stored permanently in a non-volatile memory, even when the instrument is switched off.

If the control loop is not stable after some minutes of active operating, e.g. the temperature is oscillating between two values which differ about 0.5 °C, the P-portion should be decreased.

If the measured temperature does not become equal to the desired temperature, the I-portion should be increased.

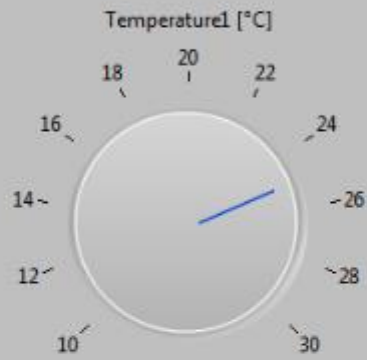
#### Remark:

In general a larger P-portion or a smaller I-portion speeds up the settling time of the control loop, but with the first the controller might oscillate and with the latter there might be a permanent difference between the actual temperature and the desired temperature.

Due to the large heat capacity and heat load of high power laser diodes and the needed heatsinks, it takes some minutes until a stable operating point is reached.

# Settings

Laser Temperature 1 Timing 1 Cooler 1 Pilot Laser External Inputs Calibration



Temperature1 [°C]

Temp Low1

Temp Up1

P1

I1

D1

### 4.2.3 Settings – TIMING Menu

Within the Timing menu it can be set the pulse width, the pulse period and the time limit. Confirm the selection with the **UP/DOWN** buttons or enter the value directly. The desired value is stored permanently in a non-volatile memory, even when the instrument is switched off.

Notes:

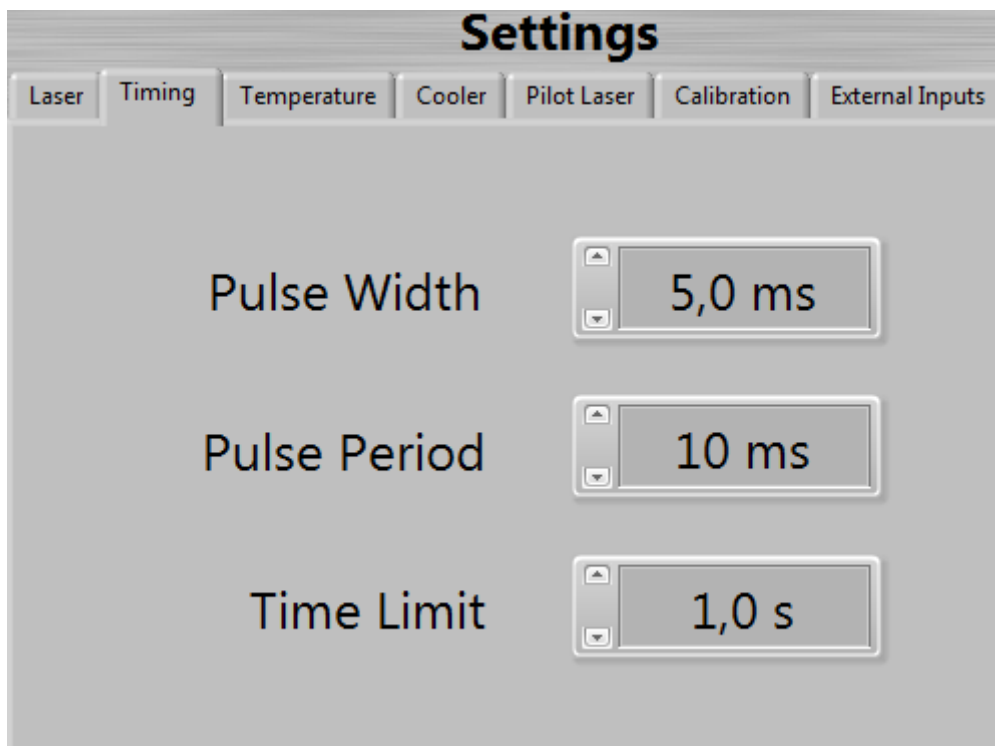
The two parameters “pulse width” and “pulse period” depend on each other. The instrument will automatically force the other parameter within the valid range depending on the change of the selected parameter.

Values of the pulse width which are larger than the pulse period are not accepted by the instrument.

The pulse width must be within the range of 5.0 ms to 490 ms.

The pulse period must be within the range of 10 ms to 500 ms.

The time limit must be within the range of 0.1 s to 99.9 s.



## 4.2.4 Settings – COOLER Menu

The Laser Diode Controller can work without, with one or with two cooler controllers. Before working, the appropriate cooler must be enabled.

### Attention

Before you enable a cooler, make sure that:

- the Laser Diode Controller was purchased with the appropriate cooler controller, see menu CONFIG (device manual)
- the correct sensor type is connected on the correct connector, see section *Connectors pin-out* (device manual),
- the correct sensor type is selected by software, see menu [COOLER](#),
- the appropriate cooler current limit is set, see menu [COOLER](#).

### Cooler 1/2

Change the setting between ENABLE and DISABLE with the **ON/OFF** button. The desired cooler setting is stored permanently in a non-volatile memory, even when the instrument is switched off.

### Sensor 1/2

The Laser Diode Controller can work with three several temperature sensor types: NTC, PT100, PT1000.

### Attention

Before changing the sensor type, make sure that:

- the appropriate cooler controller is disabled, see menu [COOLER](#),
- the correct sensor type is connected on the correct connector, see section *Connectors pin-out* (device manual).

Change the setting between NTC, PT100 and PT1000. The desired sensor setting is stored permanently in a non-volatile memory, even when the instrument is switched off.

### I<sub>max</sub> – cooler current limit 1/2

Cooler 1 is usually used for cooling the laser diode and delivered up to 600W  $\pm 13A @ \pm 48V$ . The cooler current limit can be set from 0 .. 12A or 0 .. 13A.

Cooler 2 is usually used for customized applications (e.g.: laser crystal cooling) and delivered up to  $\pm 3A @ \pm 5V$ . The cooler current limit can be set from 0 .. 3A.

Always set the current limit to the maximum current value which can be found in the data sheet of the heat sink. Setting the appropriate current limit protects the peltier elements from being overloaded electrically.

### Note:

The set limit acts in both direction. E.g. current limit 2,5A means a current range  $-2,5A \dots +2,5A$ .

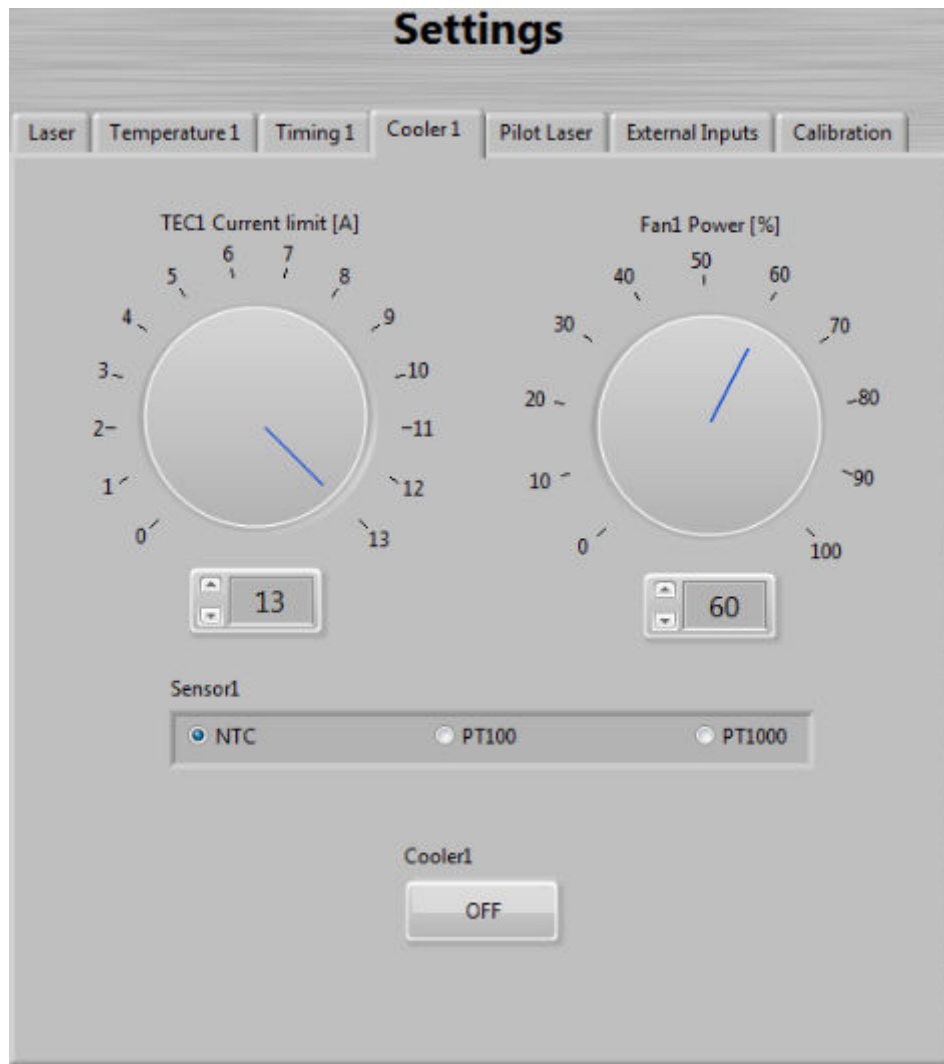
Confirm the selection with the **Rotary** knob. The desired current limit is stored permanently in a nonvolatile memory, even when the instrument is switched off.

## **Fan**

Normally the heat sink is provided with a powerfully fan. In most cases the full fan power will not be used. For that reason the fan voltage can varied between 6 .. 12V. Confirm the selection with the **Rotary** knob. The desired fan voltage is stored permanently in a non-volatile memory, even when the instrument is switched off. If cooler 1 is set disable the fan is switch off.

### Note:

Only do reduce the fan voltage either if the laser diode is in operation for short periods or with reduced power. Increase the fan voltage if the cooler cannot held the set temperature.



## 4.2.5 Settings – PILOT LASER Menu

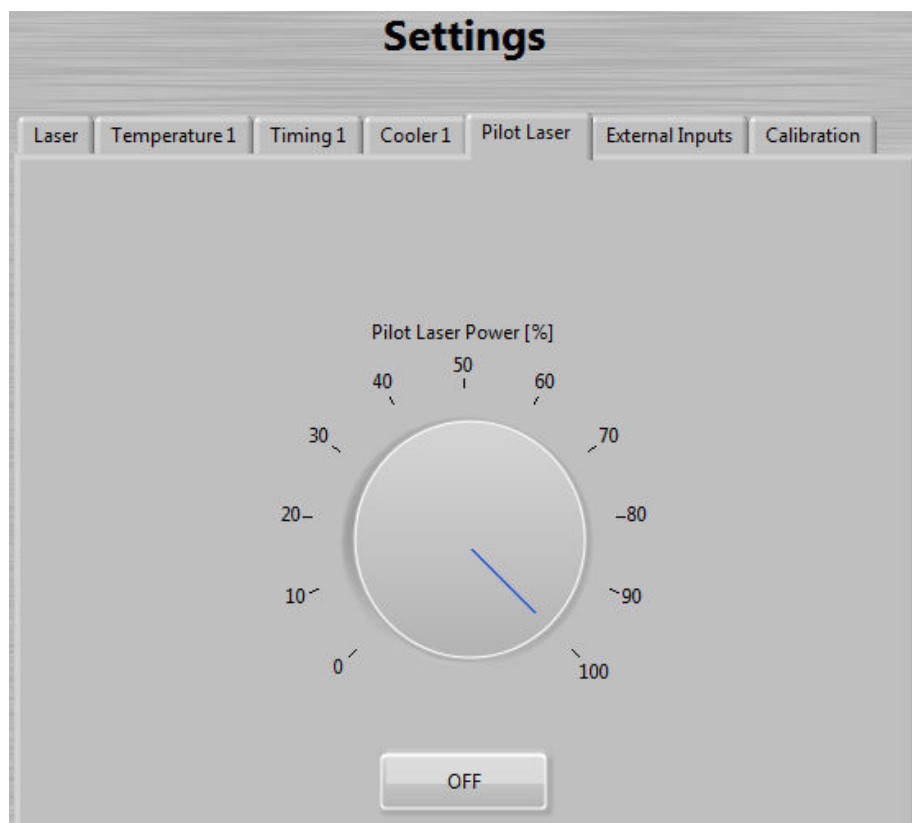
The Laser Diode Controller can drive a pilot laser up to 300mA. Before you enable, make sure that your Laser Diode was purchased with the appropriate pilot laser, see *Delivery Note*. This source deliver constant voltage (+5,0V) for a build in pilot laser (with integrated small driver). Do not drive a laser diode on this source directly.

### Pilot Laser

Change the pilot laser setting between ON and OFF with the **Button**.

### Power

The pilot laser power can be reduced by a PWM (pulse width modulation) of its supply voltage. It can be set to values between 1% and 100%. The desired value is stored permanently in a non-volatile memory, even when the instrument is switched off.





## 4.2.6 Settings – EXTERNAL INPUTS Menu

Some Laser Electronics LE GmbH devices provides an external analogue modulation input, an external triggering input and an external triggering output.

### Analogue Input

The analogue modulation signal is applied to the **Analog In** connector at the front panel. The valid range for the signal is 0 V to +10 V. The transfer function for the applied signal voltage to the laser diode current is 10 A / V. The modulation bandwidth is DC to 100 Hz. E.g.: A signal voltage of 5 V refers to a laser diode current of 50A.

For maximum protection of the laser diode the current of the laser diode is limited to the selected current limit. Therefore it might happen that the analogue modulated laser light is distorted due to the clipping of the maximum applied current to the laser diode. In order not to distort the analogue modulated laser light, pay attention not to exceed the valid analogue modulation signal level according to the transfer function for the current.

The laser diode should be turned on with the **Laser** button prior to the external inputs.

Change the input setting between ENABLE and DISABLE with the **Option button**. Confirm the value with the **Enter** key. The external input mode is set to DISABLE when the instrument is switched off.

### Trigger Input

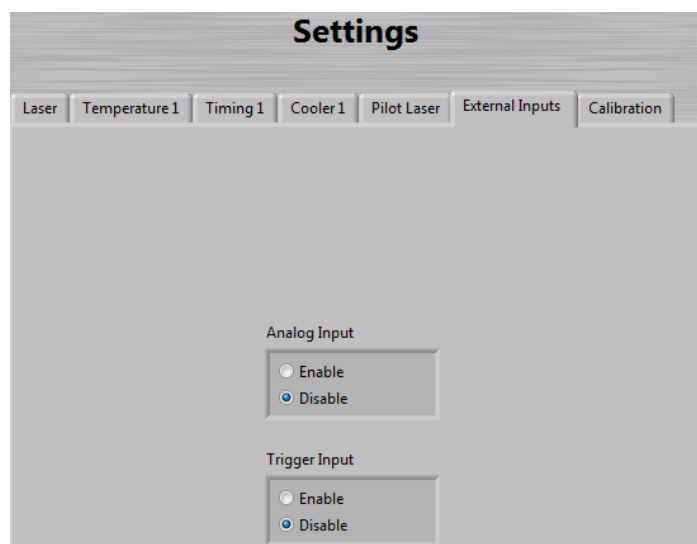
The trigger signal is applied to the **Trig In** connector (9) at the front panel. The valid range for the signal is according the specifications for TTL signals (Low: 0 V < U < 0.8V, High: 2.4 V < U < 5 V). The bandwidth is DC to 100 Hz. An applied TTL-low signal leads to a turned off laser. An applied TTL-high signal leads to a turned on laser with the set laser diode current, see menu LASER. E.g.: If the laser diode current is set to „I = 25A“, this current is applied to the laser diode when a TTL-high signal is detected as external trigger signal.

The laser diode should be turned on with the **Laser** button prior to the external inputs.

Change the input setting between ENABLE and DISABLE with the **Option button**. The desired external input mode is stored permanently in a non-volatile memory, even when the instrument is switched off.

### Trigger Output

The signal on the trigger output connector **Trig Out** (10) provides a synchronization between the internally generated pulses, as specified by the pulse operational mode, and the external trigger. The output is according to the specifications for TTL signals.



## 4.2.7 Settings – CALIBRATION Menu

### Calibrations Points

Because the laser diode current and its optical output power are approximately linear to each other, it is possible to calculate the optical power from the current if the user set two measured pairs of laser current / optical power.

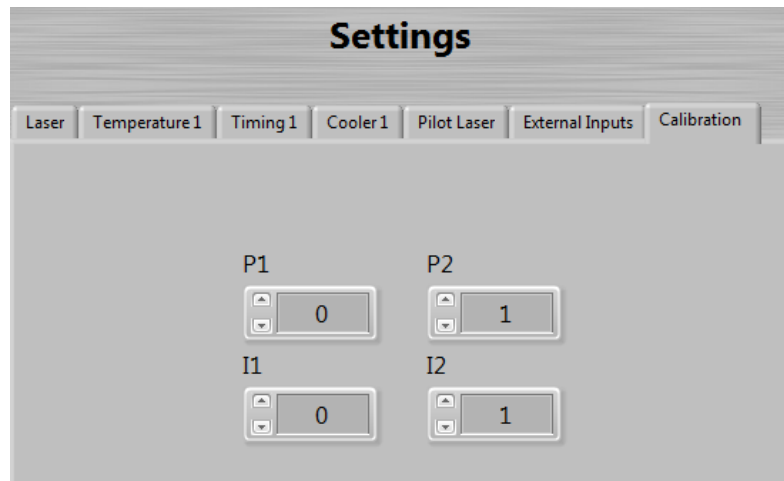
E.g. the user set current to 20A and measured 30W optical power by a power meter.  $I_1=20A$ ,  $P_1=30W$ .

Then he set current to 30A and measured 55W optical power.  $I_2=30A$ ,  $P_2=55W$ .

### Note:

The deviations from the correct value can increase with distance from the measured value.

Confirm the selection with the **UP/DOWN** buttons or enter the value directly. The desired value is stored permanently in a non-volatile memory, even when the instrument is switched off.



## 4.3 Error Messages

### Interlock error

If interlock loop is opened, the laser is turned off immediately and the following message appears on the display:

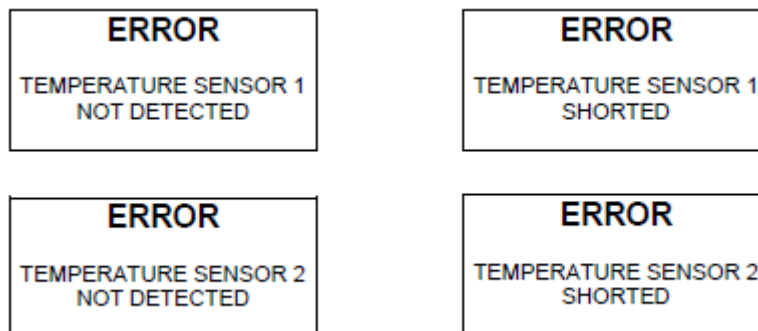


The error message must be confirmed by pressing the **Clear Error** button.

After the interlock loop is closed again, the laser diode can be turned on again by pressing the **Laser** button. If the interlock loop is still opened, the error message appears again after the **Laser** button is pressed.

### Temperature sensor error

If an temperature sensor circuit is shortened or opened, the laser diode and the thermoelectric coolers are turned off immediately. One of the following messages appears on the display:



The error message must be confirmed by pressing the **Clear Error** button.

After the Laser Diode Controller detects the temperature sensor again, the temperature controller starts working again according to the parameters as before the error occurred. The laser diode must be turned on again by pressing the **Laser** button. If the error is still present, the error message appears again after the **Laser** button is pressed.

### Remarks:

The error concerning the temperature sensor also appears if the connector for the thermoelectric cooler and the temperature sensor (also named connector for the heat sink) is not connected to the instrument. Before providing this connection, the Laser Diode Controller has to be turned off.

### **Temperature range error**

If the temperature of a cooler is out of the range as defined with the temperature limits in TEMPERATURE menu, the laser diode and the thermoelectric coolers are turned off immediately. One of the following messages appears on the display:

**ERROR**  
TEMPERATURE 1  
OUT OF RANGE

**ERROR**  
TEMPERATURE 2  
OUT OF RANGE

The error message must be confirmed by pressing the **Clear Error** button.

After the laser diode reaches the allowed temperature range again, the laser diode can be turned on again by pressing the **Laser** button. If the error is still present, the error message appears again after the **Laser** button is pressed.

### **Overload error**

If a device module of the Laser Diode Controller overloaded, the laser diode and the thermoelectric coolers are turned off immediately. One of the following messages appears on the display:

**ERROR**  
LASER DRIVER  
OVERLOAD

**ERROR**  
COOLER DRIVER 1  
OVERLOAD

**ERROR**  
COOLER DRIVER 2  
OVERLOAD

# 5 Reference

## 5.1 Menu and Toolbar

### Terminal Menu

#### →Exit

Quit LETSoft

### Settings Menu

#### →Serial Port Settings

In this menu you can set whether the search for the device should be done automatically, or you can make the entry manually.

### Demo Menu

#### →Start Demo Version

Opens the demo version of LETSoft. There, one of LASER ELECTRONICS LE GMBH devices is simulated.

### Help Menu

#### →USB-Driver

coming soon

#### →Support

This menu item will take you to our website. There you can get in contact with us.